

APPENDIX

SOME PRINCIPAL TABLES

CONFIDENTIAL

TABLE I

Area and population—Urban and Rural—of Tumkur district as in 1961

Sl. No.	Taluk	Area in square miles	Area in square kilometres	Population 1961			Density		Population in 1951	Percentage increase over 1951
				Rural	Urban	Total	Per square mile	Per square kilometre		
1	2	3	4	5	6	7	8	9	10	11
1.	Tumkur	.. 393.1	1,018.1	1,70,634	47,277	2,17,911	554	214	1,86,469	16.86
2.	Gubbi	.. 475.1	1,230.5	1,33,879	8,543	1,47,422	310	120	1,25,699	17.28
3.	Kunigal	.. 380.5	985.5	1,44,507	10,566	1,55,073	408	157	1,35,433	14.50
4.	Chiknayakanahalli	.. 418.5	1,083.9	1,05,282	10,375	1,15,657	276	107	91,889	25.87
5.	Tiptur	.. 320.5	830.1	99,080	15,558	1,14,638	358	138	94,142	21.77
6.	Turuvekere	.. 297.5	770.6	97,342	4,983	1,02,325	344	133	86,467	18.34
7.	Madhugiri	.. 423.9	1,097.9	1,42,518	11,275	1,53,793	363	140	1,31,042	17.36
8.	Sira	.. 573.2	1,484.6	1,38,596	15,408	1,54,004	269	104	1,25,932	22.29
9.	Koratagere	.. 243.8	631.4	85,082	4,301	89,383	367	142	78,710	13.56
10.	Pavagada	.. 547.6	1,418.3	1,06,493	10,703	1,17,196	214	83	95,579	22.62
Total		.. 4,073.7*	10,550.9*	12,28,413	1,38,989	13,67,402	336	130	11,51,362	18.76

*According to the Survey of India, the area of the district is 4,091.53 sq. miles or 10,597.11 sq. kilometres. This slight difference is due to the different methods employed in measuring the area.

TABLE II

Variation in population during sixty years from 1901 to 1961 in Tumkur district

<i>Year</i>	<i>Number of inhabited villages</i>	<i>Persons</i>	<i>Decade variation</i>	<i>Percentage decade variation</i>	<i>Males</i>	<i>Females</i>	
1	2	3	4	5	6	7	
1901	..	2,372	6,71,953	3,38,456	3,33,497
1911	..	2,362	7,39,276	+67,323	+10.02	3,73,924	3,65,352
1921	..	2,371	7,76,971	+37,695	+5.10	3,96,803	3,80,168
1931	..	2,381	8,63,227	+86,256	+11.10	4,40,036	4,23,191
1941	..	2,381	9,55,809	+92,582	+10.73	4,89,888	4,65,921
1951	..	2,392	11,51,362	+1,95,553	+20.46	5,87,988	5,63,374
1961	..	2,444	13,67,202	+2,16,040	+18.76	6,99,191	6,68,211

TABLE III

Taluks in Tumkur district classified by population in 1961 with variations since 1901

<i>Taluk</i>	<i>Year</i>	<i>Persons</i>	<i>Variation</i>	<i>Males</i>	<i>Variation</i>	<i>Females</i>	<i>Variation</i>
1	2	3	4	5	6	7	8
1. Tumkur	1901	1,07,513	..	54,194	..	53,319	..
	1911	1,16,854	+9,341	59,569	+5,375	57,285	+3,966
	1921	1,25,294	+8,440	64,207	+4,638	61,087	+3,802
	1931	1,27,945	+2,651	65,850	+1,643	62,095	+1,008
	1941	1,45,836	+17,891	75,058	+9,208	70,778	+8,683
	1951	1,86,469	+40,633	95,886	+20,828	90,583	+19,805
	1961	2,17,911	+31,442	1,12,398	+16,512	1,05,513	+14,930
2. Gubbi	1901	87,468	..	43,659	..	43,809	..
	1911	96,820	+9,352	48,791	+5,132	48,029	+4,220
	1921	1,02,967	+6,147	52,821	+4,030	50,146	+2,117
	1931	1,12,358	+9,391	57,269	+4,448	55,089	+4,494
	1941	1,06,318	-6,040	54,336	-2,933	51,982	-3,107
	1951	1,25,699	+19,381	63,990	+9,654	61,709	+9,727
	1961	1,47,422	+21,723	74,948	+10,958	72,474	+10,765

TABLE III—(contd.)

1	2	3	4	5	6	7	8
3. Kunigal	1901	77,861	..	38,586	..	39,275	..
	1911	83,812	+5,951	41,349	+2,763	42,463	+3,188
	1921	89,093	+5,281	44,541	+3,192	44,552	+2,089
	1931	1,01,263	+12,170	50,526	+5,985	50,737	+6,185
	1941	1,11,479	+10,216	53,794	+5,268	55,685	+4,048
	1951	1,35,433	+23,954	67,598	+11,804	67,835	+12,150
	1961	1,55,073	+19,640	77,569	+9,971	77,504	+9,669
4. Tiptur	1901	54,354	..	27,276	..	27,078	..
	1911	63,621	+9,267	32,013	+4,737	31,608	+4,530
	1921	65,261	+1,640	32,904	+891	32,357	+749
	1931	74,403	+9,142	37,610	+4,706	36,793	+4,436
	1941	80,531	+6,128	40,748	+3,138	39,783	+2,990
	1951	94,142	+13,611	47,917	+7,169	46,225	+6,442
	1961	1,14,638	+20,496	58,761	+10,844	55,877	9,652
5. Chiknayakanahalli	1901	51,286	..	25,768	..	25,518	..
	1911	57,484	+6,198	29,049	+3,281	28,435	+2,917
	1921	60,498	+3,014	30,938	+1,889	29,560	+1,125
	1931	68,734	+8,236	35,132	+4,194	33,602	+4,042
	1941	76,748	+8,014	39,509	+4,377	37,239	+3,637
	1951	91,889	+15,141	47,203	+7,694	44,686	+7,447
	1961	1,15,657	+23,768	59,719	+12,516	55,938	+11,252

TABLE III—(contd.)

I	2	3	4	5	6	7	8
6. Turuvekere ..	1901	36,355	..	17,535	..	18,820	..
	1911	39,175	+2,820	18,763	+1,228	20,412	+1,592
	1921	39,537	+362	19,559	+796	19,978	- 434
	1931	43,941	+4,404	21,798	+2,239	22,143	+2,165
	1941	72,644	+28,703	36,243	+14,445	36,401	+14,258
	1951	86,467	+13,823	43,065	+6,822	43,402	+7,001
	1961	1,02,325	+15,858	51,564	+8,499	50,761	+7,359
7. Madhugiri ..	1901	84,318	..	43,313	..	41,005	..
	1911	89,987	+5,669	45,983	+2,670	44,004	+2,999
	1921	93,513	+3,526	48,348	+2,365	45,165	+1,161
	1931	98,350	+4,837	50,650	+2,302	47,700	+2,535
	1941	1,12,655	+14,305	58,382	+7,732	54,273	+6,573
	1951	1,31,042	+18,387	67,553	+9,171	63,489	+9,216
	1961	1,53,793	+22,751	79,260	+11,707	74,533	+11,044
8. Sira ..	1901	77,604	..	39,301	..	38,303	..
	1911	89,311	+11,707	45,483	+6,128	43,828	+5,525
	1921	93,324	+4,013	47,880	+2,397	45,444	+1,616
	1931	1,00,458	+7,134	51,228	+3,348	49,230	+3,786
	1941	1,04,525	+4,067	54,402	+3,174	50,123	+893
	1951	1,25,932	+21,407	64,489	+10,087	61,443	+11,320
	1961	1,54,004	+28,072	79,022	+14,533	74,982	+13,539

TABLE III—(concl'd.)

1	2	3	4	5	6	7	8
9. Koratagere	1901	33,953	..	17,382	..	16,571	..
	1911	41,041	+7,088	21,390	+4,008	19,651	+3,080
	1921	41,955	+914	21,832	+442	20,123	+472
	1931	63,009	+21,054	32,435	+10,603	30,574	+10,451
	1941	65,415	+2,406	33,826	+1,391	31,589	+1,015
	1951	78,710	+13,295	40,602	+6,776	38,108	+6,519
	1961	89,383	+10,673	45,634	+5,032	43,749	+5,641
10. Pavagada	1901	61,241	..	31,442	..	29,799	..
	1911	61,171	-70	31,534	+92	29,637	-162
	1921	65,529	+4,358	33,773	+2,239	31,756	+2,119
	1931	72,766	+7,237	37,538	+3,765	35,228	+3,472
	1941	79,658	+6,892	41,590	+4,052	38,068	+2,840
	1951	95,579	+15,921	49,685	+8,095	45,894	+7,826
	1961	1,17,196	+21,617	60,316	+10,631	56,880	+10,986

TABLE IV

Towns and town-groups in Tumkur district classified by population in 1961 with variations since 1901

<i>Name of Town</i>	<i>Year</i>	<i>Persons</i>	<i>Decade variation</i>	<i>Percentage decade variation</i>	<i>Males</i>	<i>Females</i>
1	2	3	4	5	6	7
1. Tumkur	1901	11,888	6,024	5,864
	1911	6,039	-5,849	-49.20	3,267	2,772
	1921	14,246	+8,207	+135.9	7,599	6,647
	1931	18,196	+3,950	+27.73	9,880	8,316
	1941	21,893	+3,697	+20.32	11,589	10,304
	1951	35,999	+14,106	+64.43	19,107	16,892
	1961	47,277	+11,278	+31.33	25,324	21,953
2. Tiptur	1901	3,560	1,854	1,706
	1911	2,531	-1,029	-28.90	1,423	1,108
	1921	4,311	+1,780	+70.33	2,244	2,067
	1931	5,160	+849	+19.69	2,798	2,362
	1941	7,513	+2,353	+45.60	3,996	3,517
	1951	11,803	+4,290	+57.10	6,256	5,547
	1961	15,558	+3,755	+31.81	8,190	7,368

TABLE IV—(contd.)

1	2	3	4	5	6	7
3. Sira	1901	4,059	2,001	2,058
	1911	5,573	+1,514	+37.30	2,767	2,806
	1921	5,596	+23	+0.41	2,824	2,772
	1931	6,894	+1,298	+23.20	3,506	3,388
	1941	6,797	-97	-1.41	3,625	3,172
	1951	12,182	+5,385	+79.23	6,263	5,919
	1961	15,408	+3,226	+26.48	7,926	7,482
4. Madhugiri	1901	4,060	1,971	2,089
	1911	4,545	+485	+11.95	2,284	2,261
	1921	5,143	+598	+13.16	2,600	2,543
	1931	5,865	+722	+14.04	3,060	2,805
	1941	1,460	-4,405	-75.11	803	657
	1951	5,416	+3,956	+270.96	2,816	2,600
	1961	11,275	+5,859	+108.18	5,964	5,311
5. Kunigal	1901	1,802	918	884
	1911	1,405	-397	-22.03	712	693
	1921	3,044	+1,639	+116.65	1,561	1,483
	1931	5,341	+2,297	+75.46	2,757	2,584
	1941	5,846	+505	+9.46	2,993	2,853
	1951	8,908	+3,062	+52.38	4,522	4,386
	1961	10,566	+1,658	+18.61	5,381	5,185

TABLE IV—(contd.)

1	2	3	4	5	6	7
6. Chiknayakanahalli ..	1901	6,113	3,022	3,091
	1911	5,188	-925	-15.13	2,551	2,637
	1921	6,432	+1,244	+23.98	3,275	3,157
	1931	6,612	+180	+2.80	3,316	3,296
	1941	3,313	-3,299	-49.89	1,721	1,592
	1951	8,388	+5,075	+153.18	4,292	4,096
	1961	10,375	+1,987	+23.69	5,374	5,001
7. Gubbi ..	1901	5,593	2,822	2,771
	1911	3,464	-2,129	-38.07	1,767	1,697
	1921	5,263	+1,799	+51.93	2,703	2,560
	1931	5,663	+400	+7.60	2,884	2,779
	1941	6,129	+466	+8.23	3,171	2,958
	1951	7,145	+1,016	+16.58	3,640	3,505
	1961	8,543	+1,398	+19.57	4,352	4,191
8. Pavagada ..	1901	2,840	1,427	1,413
	1911	2,594	-246	-8.66	1,297	1,297
	1921	2,529	-65	-2.51	1,276	1,253
	1931	2,750	+221	+8.74	1,419	1,331
	1941	3,534	+784	+28.51	1,757	1,777
	1951	4,480	+946	+26.77	2,370	2,110
	1961	5,913	+1,433	+31.99	3,144	2,769

TABLE IV—(concl'd.)

1	2	3	4	5	6	7
9. Turuvekere	.. 1901	2,333	1,137	1,196
	1911	2,685	+352	+15.09	1,302	1,383
	1921	1,936	-749	-27.90	993	943
	1931	2,136	+200	+10.33	1,078	1,058
	1941	2,678	+542	+25.37	1,341	1,337
	1951	3,732	+1,054	+39.36	1,945	1,787
	1961	4,983	+1,251	+33.52	2,642	2,341
10. Y. N. Hoskote*	.. 1951	4,014	2,079	1,935
	1961	4,790	+776	+19.33	2,497	2,293
11. Koratagere	.. 1901	2,811	1,396	1,415
	1911	2,965	+154	+5.48	1,500	1,465
	1921	3,028	+63	+2.12	1,580	1,448
	1931	2,969	-59	-1.95	1,484	1,485
	1941	2,979	+10	+0.34	1,524	1,455
	1951	3,695	+716	+24.03	1,949	1,746
	1961	4,301	+606	+16.40	2,254	2,047

* Y. N. Hoskote was treated as a town for the first time in the 1951 Census and was continued as such in the 1961 Census also.

TABLE V

Literacy in Tumkur district by taluks in 1951 and 1961

Taluk	Literates, 1951			Percentage of literates	Literates, 1961			Percentage of literates
	Males	Females	Total		Males	Females	Total	
1	2	3	4	5	6	7	8	9
Tumkur district ..	1,62,074	39,211	2,01,285	17.5	2,37,598	71,994	3,09,592	22.6
Tumkur ..	33,122	11,893	45,015	24.1	45,278	18,665	63,943	29.3
Madhugiri ..	15,231	2,842	18,073	10.0	24,544	6,403	30,947	20.1
Koratagere ..	10,958	2,725	13,683	17.4	13,253	3,768	17,021	19.0
Sira ..	17,337	3,241	20,578	16.3	26,059	6,620	32,679	21.2
Pavagada ..	10,008	1,837	11,845	12.4	15,513	3,461	18,974	16.1
Chiknayakanahalli ..	15,291	3,532	18,823	20.5	22,609	6,881	29,490	25.4
Gubbi ..	17,228	3,687	20,915	16.6	23,711	6,777	30,488	20.6
Tiptur ..	17,728	4,303	22,031	23.4	25,398	8,135	33,533	29.2
Turuvekere ..	11,111	2,076	13,187	15.3	19,184	5,198	24,382	23.8
Kunigal ..	14,060	3,075	17,135	12.7	22,049	6,086	28,135	18.1

TABLE VI
Literacy in towns of Tumkur district in 1951 and 1961

Town	Literates, 1951			Percentage of literates	Literates, 1961			Percentage of literates
	Males	Females	Total		Males	Females	Total	
1	2	3	4	5	6	7	8	9
Tumkur district (Urban)	30,902	15,963	46,865	44.3	43,280	24,399	67,679	48.69
Tumkur ..	11,855	6,887	18,742	52.1	15,973	9,915	25,888	54.76
Chiknayakanahalli ..	2,200	1,000	3,200	38.2	3,108	1,414	4,522	43.59
Gubbi ..	1,980	1,016	2,996	41.9	2,347	1,320	3,667	42.92
Koratagere ..	1,669	821	2,490	67.4	1,354	659	2,013	46.80
Kunigal ..	1,831	934	2,765	31.0	3,113	1,842	4,955	46.92
Madhugiri ..	1,414	667	2,081	38.4	3,675	1,941	5,616	49.81
Pavagada ..	1,257	505	1,762	39.3	1,754	750	2,504	42.35
Y. N. Hoskote ..	883	298	1,181	29.4	1,189	437	1,626	33.95
Sira ..	3,203	1,463	4,666	38.3	4,480	2,650	7,130	46.27
Tiptur ..	3,605	1,856	5,461	46.3	4,712	2,678	7,390	47.50
Turuvekere ..	1,005	516	1,521	40.8	1,575	793	2,368	47.52

TABLE VII

Occupational classification of persons at work (other than cultivation) in Tumkur district as in 1961

<i>Sl. No.</i>	<i>Occupations</i>	<i>Males</i>	<i>Females</i>	<i>Total</i>
1	2	3	4	5
1.	Engineers, Architects and Surveyors	226	1	227
2.	Physicians, Surgeons and Dentists	293	12	305
3.	Nurses, Pharmacists and other Medical and Health Technicians	292	160	452
4.	Teachers	4,554	436	4,990
5.	Jurists (including Legal Practitioners and Legal Advisers)	155	1	156
6.	Artists, Writers and related workers	245	52	297
7.	Administrative, Executive and Managerial workers (both Government and private)	4,136	190	4,326
8.	Clerical and related workers (including Stenographers, Typists, Book-keepers and Cashiers)	3,818	143	3,961
9.	Unskilled Office-workers (including Attendants etc.)	1,646	123	1,769
10.	Working Proprietors—wholesale and retail trade	9,248	2,340	11,588
11.	Salesmen, Shop-Assistants and related workers	2,228	658	2,886
12.	Farmers, Farm-workers (Animals, birds and insect-rearing), Fishermen, Gardeners, Tappers, etc.	28,851	9,261	38,112
13.	Workers in transport and communication occupations (including Railways, Road Transport, Posts and Telegraphs, etc.)	1,774	11	1,785

TUMKUR DISTRICT

621

TABLE VII—(contd.)

1	2	3	4	5
14.	Spinners, Weavers, Dyers and related workers	5,549	6,133	11,682
15.	Tailors, Cutters and related workers	3,032	651	3,683
16.	Shoe-makers, Shoe-repairers, Leather-cutters and related workers	1,241	25	1,266
17.	Blacksmiths, Furnacemen and related workers	1,628	..	1,628
18.	Jewellers, Goldsmiths and Silversmiths	2,127	133	2,260
19.	Tool-makers, Machinists, Welders and related workers	793	7	800
20.	Electricians and related workers	543	1	544
21.	Carpenters, Cabinet-makers and related workers	2,110	98	2,208
22.	Brick-layers, Plasterers, Stone-cutters and other construction workers	4,377	1,051	5,428
23.	Potters, Kilnmen, Clay-formers and related workers	1,906	743	2,649
24.	Millers, Bakers, Oilseed-pressers, Pounders and related food and beverage workers	1,358	398	1,756
25.	Basket-weavers and production process workers	670	1,589	2,259
26.	Policemen, Guards, Watchmen and related workers	981	8	989
27.	Cooks, Maids, House-keepers and related workers	1,957	529	2,486
28.	Waiters, Bar-tenders and related workers	413	11	424
29.	Cleaners, Sweepers, Watermen, Building-caretakers, etc.	503	101	604
30.	Barbers, Hair-dressers and related workers	1,269	..	1,269
31.	Washermen, Laundrymen and Dhobies	1,810	1,082	2,892
32.	Labourers, not classifiable by occupation	153	23	176

Source :—Census of India, 1961, Vol. XI, Mysore, Part II-B (ii), General Economic Tables.

TABLE VIII

Livestock Population in Tumkur district

A—CATTLE AND BUFFALOES AS PER LIVESTOCK CENSUSES OF 1961 AND 1966

Sl. No.	Taluk	Cattle						Buffaloes					
		1961			1966			1961			1966		
		Male	Female	Total	Male	Female	Total	Male	Female	Total	Male	Female	Total
1	2	3	4	5	6	7	8	9	10	11	12	13	14
1.	Tumkur ..	37,533	54,963	92,496	35,813	53,767	89,580	3,191	14,976	18,167	2,171	15,268	17,439
2.	Gubbi ..	33,074	44,226	77,300	29,519	39,215	68,734	3,329	11,921	15,250	2,267	11,140	13,407
3.	Kunigal ..	32,517	47,660	80,177	29,966	44,955	74,921	3,967	17,397	21,364	2,972	17,082	19,951
4.	Tiptur ..	29,741	28,311	58,052	27,881	25,892	53,773	2,137	10,600	12,737	1,660	9,623	11,283
5.	Chiknayakanahalli.	32,898	30,968	63,866	30,469	29,306	59,775	3,010	12,471	15,481	2,115	10,453	12,568
6.	Turuvekere	25,522	25,106	50,628	23,289	21,338	44,627	2,337	11,694	14,031	1,966	11,710	13,676
7.	Madhugiri ..	31,869	25,257	57,126	30,436	23,810	54,246	4,666	15,295	19,961	3,689	16,018	19,707
8.	Sira ..	33,614	26,865	60,479	32,382	25,548	57,930	4,707	16,074	20,781	4,480	16,441	20,921
9.	Koratagere	20,907	26,829	47,736	20,537	25,171	45,708	1,437	7,201	8,638	1,202	7,749	8,951
10.	Pavagada ..	33,211	26,709	59,920	36,057	27,994	64,051	4,670	11,453	16,123	3,564	11,168	14,732
	Total ..	3,10,886	3,36,894	6,47,780	2,96,349	3,16,996	6,13,345	33,451	1,29,082	1,62,533	25,986	1,26,652	1,52,638

TABLE VIII—(contd.)

B—NUMBER OF OTHER LIVESTOCK AS ASCERTAINED BY LIVESTOCK CENSUSES OF 1961 AND 1966

Sl. No.	Taluk	Sheep		Goats		Horses and Ponies		Mules		Donkeys		Pigs	
		1961	1966	1961	1966	1961	1966	1961	1966	1961	1966	1961	1966
1	2	3	4	5	6	7	8	9	10	11	12	13	14
1.	Tumkur ..	43,699	47,026	29,120	25,715	264	244	368	629	1,754	1,075
2.	Gubbi ..	67,060	62,493	27,447	23,506	64	362	..	2	519	681	1,662	1,950
3.	Kunigal ..	93,599	92,225	42,018	32,489	596	185	1,006	1,094	1,010	938
4.	Tiptur ..	55,311	47,492	15,987	13,416	136	306	480	730	704	707
5.	Chiknayakanahalli.	68,265	58,354	25,541	24,832	36	185	174	151	1,527	997
6.	Turuvekere	76,064	65,957	21,239	18,971	165	303	3,199	1,017	456	934
7.	Madhugiri ..	1,01,853	91,026	37,659	28,195	84	152	1,238	1,448	2,886	2,972
8.	Sira ..	1,33,330	1,28,791	27,716	25,690	242	482	..	9	890	1,163	2,092	2,293
9.	Koratagere	34,514	33,872	24,137	17,311	9	167	..	3	346	284	2,339	1,425
10.	Pavagada ..	92,980	92,263	37,933	39,432	129	1,437	..	8	1,639	1,320	2,795	7,287
Total ..		7,66,675	7,23,499	2,88,897	2,55,557	1,725	3,823	..	22	8,059	3,517	17,225	20,578

TABLE VIII—(contd.)

C—NUMBER OF POULTRY AS PER LIVESTOCK CENSUS OF 1961

Sl. No.	Taluk	Fowls				Ducks				Others	Total Poultry
		Hens	Cocks	Chicken	Total	Ducks	Drakes	Ducklings	Total		
1	2	3	4	5	6	7	8	9	10	11	12
1.	Tumkur ..	22,235	13,795	31,667	67,697	5	13	9	27	226	67,950
2.	Gubbi ..	21,066	6,488	24,062	51,616	4	8	..	12	..	51,628
3.	Kunigal ..	46,747	15,471	75,272	1,37,490	28	97	2	127	23	1,37,640
4.	Tiptur ..	11,704	4,827	15,482	32,013	7	8	..	15	..	32,028
5.	Chiknayakanahalli.	12,429	5,149	17,408	34,986	3	7	13	23	97	35,106
6.	Turuvekere ..	17,536	6,812	26,537	50,885	7	2	131	140	16	51,041
7.	Madhugiri ..	18,028	5,771	30,810	54,609	10	17	2	29	..	54,638
8.	Sira ..	27,038	11,113	44,001	82,152	23	29	14	66	127	82,345
9.	Koratagere ..	13,767	4,107	21,109	38,983	5	9	4	18	..	39,001
10.	Pavagada ..	14,657	5,568	27,199	47,424	23	15	10	48	..	47,472
	Total ..	2,05,207	79,101	3,13,547	5,97,855	115	205	185	505	489	5,98,849

TABLE VIII-- (concl'd.)

C--NUMBER OF POULTRY AS PER LIVESTOCK CENSUS OF 1966

Sl. No.	Taluk	Fowls				Ducks				Others	Total Poultry
		Hens	Cocks	Chicken	Total	Ducks	Drakes	Ducklings	Total		
1	2	3	4	5	6	7	8	9	10	11	12
1.	Tumkur ..	29,204	10,542	31,683	71,429	205	630	353	1,188	287	72,904
2.	Gubbi ..	19,685	7,603	17,513	44,801	1	2	34	37	..	44,838
3.	Kunigal ..	43,805	13,846	64,312	1,21,963	37	81	13	131	..	1,22,094
4.	Tiptur ..	11,673	5,338	14,136	31,147	69	88	..	157	13	31,317
5.	Chiknayakanahalli.	13,905	6,042	16,677	36,624	240	199	..	439	..	37,063
6.	Turuvekere ..	20,528	7,341	27,278	55,147	8	55,155
7.	Madhugiri ..	17,108	4,925	19,060	41,093	28	34	1	63	1	41,157
8.	Sira ..	21,602	9,830	33,704	65,136	1	2	4	7	..	65,143
9.	Koratagere ..	13,664	3,868	12,787	30,319	..	18	..	18	..	30,337
10.	Pavagada ..	19,433	8,289	24,056	51,758	185	124	..	309	..	52,067
Total ..		2,10,587	77,624	2,61,209	5,49,420	766	1,178	405	2,349	309	5,52,078

Metric Weights and Measures

Length—

- 10 millimetres = 1 centimetre
 100 centimetres = 1 metre
 1,000 metres = 1 kilometre
 1,852 metres = 1 nautical mile (international)

Area—

- 100 square millimetres = 1 square centimetre
 10,000 square centimetres = 1 square metre or centiare
 100 square metres = 1 are
 100 ares = 1 hectare
 100 hectares or 1,000,000 square metres = 1 square kilometre

Volume—

- 1,000,000 cubic centimetres = 1 cubic metre

Capacity—

- 1,000 millilitres = 1 litre
 1,000 litres = 1 kilolitre

Weights—

- 1,000 milligrams = 1 gram
 1,000 grams = 1 kilogram
 100 kilograms = 1 quintal
 1,000 kilograms = 1 tonne
 200 milligrams = 1 carat

Conversion Factors

Length—

- 1 inch = 2.54 centimetres
 1 foot = 30.48 centimetres
 1 yard = 91.44 centimetres
 1 mile = 1.61 kilometres
 1 nautical mile (UK) = 1,853.18 metres
 1 nautical mile (international) = 1,852 metres

Volume—

- 1 cubic foot = 0.028 cubic metre

Area—

- 1 square foot = 0.093 square metre
 1 square yard = 0.836 square metre
 1 square mile = 2.59 square kilometres
 1 acre = 0.405 hectare

Capacity—

- 1 gallon (Imperial) = 4.55 litres
 1 seer (80 tolas) = 0.937 litre
 1 Madras measure = 1.77 litres

Temperature—

- T° Fahrenheit = $\frac{9}{5}$ (T° centigrade) + 32

**Metric Weights and their nearest equivalents in F.P.S.
System and in the district of Tumkur**

Sl. No.	Weights in Metric System (1 kg. = 1,000 gms.)		Equivalents in F.P.S. System		Equivalents in the District of Tumkur		
	Kgs.	Gs.	Lbs.	Ozs.	Mds.	Srs.	Tolas
1	50	..	110	3-5/8	4	18	15
2	20	..	44	1-1/2	1	31	11
3	10	..	22	3/4	0	35	17 1/2
4	5	..	11	3/8	0	17	20-3/4
5	2	..	4	6-1/2	0	7	3 1/2
6	1	..	2	3	0	3	13-3/4
7		500	1	1-3/5	0	1	19
8		200	0	7	0	0	17
9		100	0	3-1/2	0	0	8-1/2
10		50	0	1-3/4	0	0	4-1/3
11		20	0	7/10	0	0	1-3/4
12		10	0	7/20	0	0	17/20
13		5	0	7/40	0	0	2/5
14		2	0	7/100	0	0	1/6
15		1	0	7/200	0	0	1/12

Measures which were in use in Tumkur district and their equivalents

	<i>Seer</i>	<i>Pav</i>	<i>Chatak</i>	<i>Seer</i>	<i>Millilitre</i>
2 litres	..	1	2	1/2	1254
1 litre	..	0	3	1/4	625
500 ml	..	0	1 1/2	1/8	312
200 ml	..	0	1/2	1/8	156
100 ml	..	0	0	1/4	78
50 ml	..	0	0	5/8	40
20 ml	..	0	0	1/4	20

Denominations of litre measures in use

20 litres	1 litre	50 ml
10 litres	500 ml	20 ml
5 litres	200 ml	
2 litres	100 ml	

Cylindrical-type Aluminium, Brass and Stainless Steel pouring and dipping
measures for liquids only.

G. I. Conical measures for kerosene and motor oils only.

1 gallon = 4.55 litres

1 litre = 1,000 millilitres

Weights in existence in Tumkur district prior to the introduction of Metric Weights and their equivalents							
Tolas		Grams		Tolas		Grams	
1-1/2		18		13-1/2		158	
3		35		15		175	
4-1/2		53		16-1/2		193	
6		70		18		210	
7-1/2		88		19-1/2		228	
9		105		21		245	
10-1/2		123		22-1/2		263	
12		140		24		280	

Seers	Tolas	Kilo-grams	Grams	Seers	Tolas	Kilo-grams	Grams
1	24	..	280	21	504	5.88	5,880
2	48	..	560	22	528	6.16	6,160
3	72	..	840	23	552	6.44	6,440
4	96	1.12	1,120	24	576	6.72	6,720
5	120	1.40	1,400	25	600	7.00	7,000
6	144	1.68	1,680	26	624	7.28	7,280
7	168	1.96	1,960	27	648	7.56	7,560
8	192	2.24	2,240	28	672	7.84	7,840
9	216	2.52	2,520	29	696	8.12	8,120
10	240	2.80	2,800	30	720	8.40	8,400
11	264	3.08	3,080	31	744	8.68	8,680
12	288	3.36	3,360	32	768	8.96	8,960
13	312	3.64	3,640	33	792	9.24	9,240
14	336	3.92	3,920	34	816	9.52	9,520
15	360	4.20	4,200	35	840	9.80	9,800
16	384	4.48	4,480	36	864	10.08	10,080
17	408	4.76	4,760	37	888	10.36	10,360
18	432	5.04	5,040	38	912	10.64	10,640
19	456	5.32	5,320	39	936	10.92	10,920
20	480	5.60	5,600	40	960	11.20	11,200

Maunds	Seers	Tolas	Kilograms	Grams
1	40	960	11.2	11,200
2	80	1,920	22.4	22,400
3	120	2,880	33.6	33,600
4	160	3,840	44.8	44,800
5	200	4,800	56.0	56,000
6	240	5,760	67.2	67,200
7	280	6,720	78.4	78,400
8	320	7,680	89.6	89,600
9	360	8,640	100.8	1,00,800
10	400	9,600	112.0	1,12,000

Source : Office of the Controller of Weights and Measures, Bangalore.

Monetary Conversion Table					
<i>Annas</i>	<i>Pies</i>	<i>Paise</i>	<i>Annas</i>	<i>Pies</i>	<i>Paise</i>
0	3	2	8	3	52
0	6	3	8	6	53
0	9	5	8	9	55
1	0	6	9	0	56
1	3	8	9	3	58
1	6	9	9	6	59
1	9	11	9	9	61
2	0	12	10	0	62
2	3	14	10	3	64
2	6	16	10	6	66
2	9	17	10	9	67
3	0	19	11	0	69
3	3	20	11	3	70
3	6	22	11	6	72
3	9	23	11	9	73
4	0	25	12	0	75
4	3	27	13	3	77
4	6	28	12	6	78
4	9	30	12	9	80
5	0	31	13	0	81
5	3	33	13	3	83
5	6	34	13	6	84
5	9	35	13	9	86
6	0	37	14	0	87
6	3	39	14	3	89
6	6	41	14	6	91
6	9	42	14	9	92
7	0	44	15	0	94
7	3	45	15	3	95
7	6	47	15	6	97
7	9	48	15	9	98
8	0	50	16	0	100

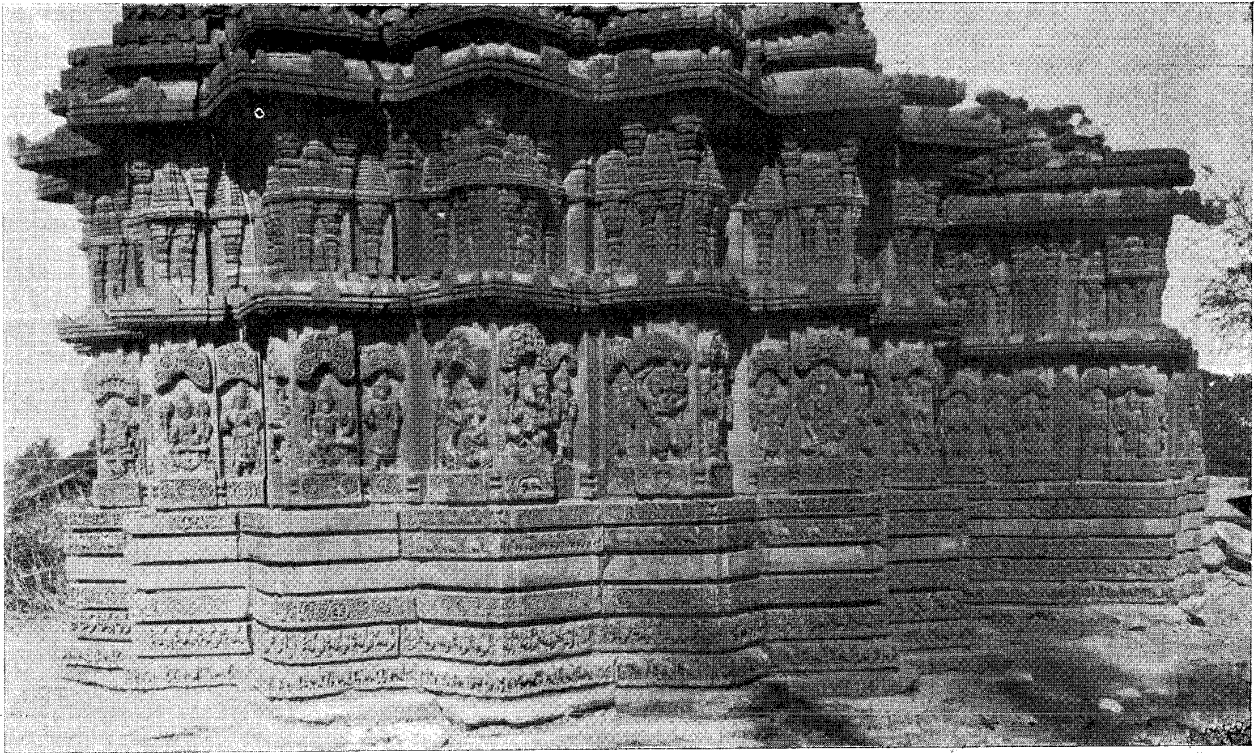
Re. 1=Annas 16=Paise 100. Pies 12=Anna 1=Paise 6.

SELECT BIBLIOGRAPHY

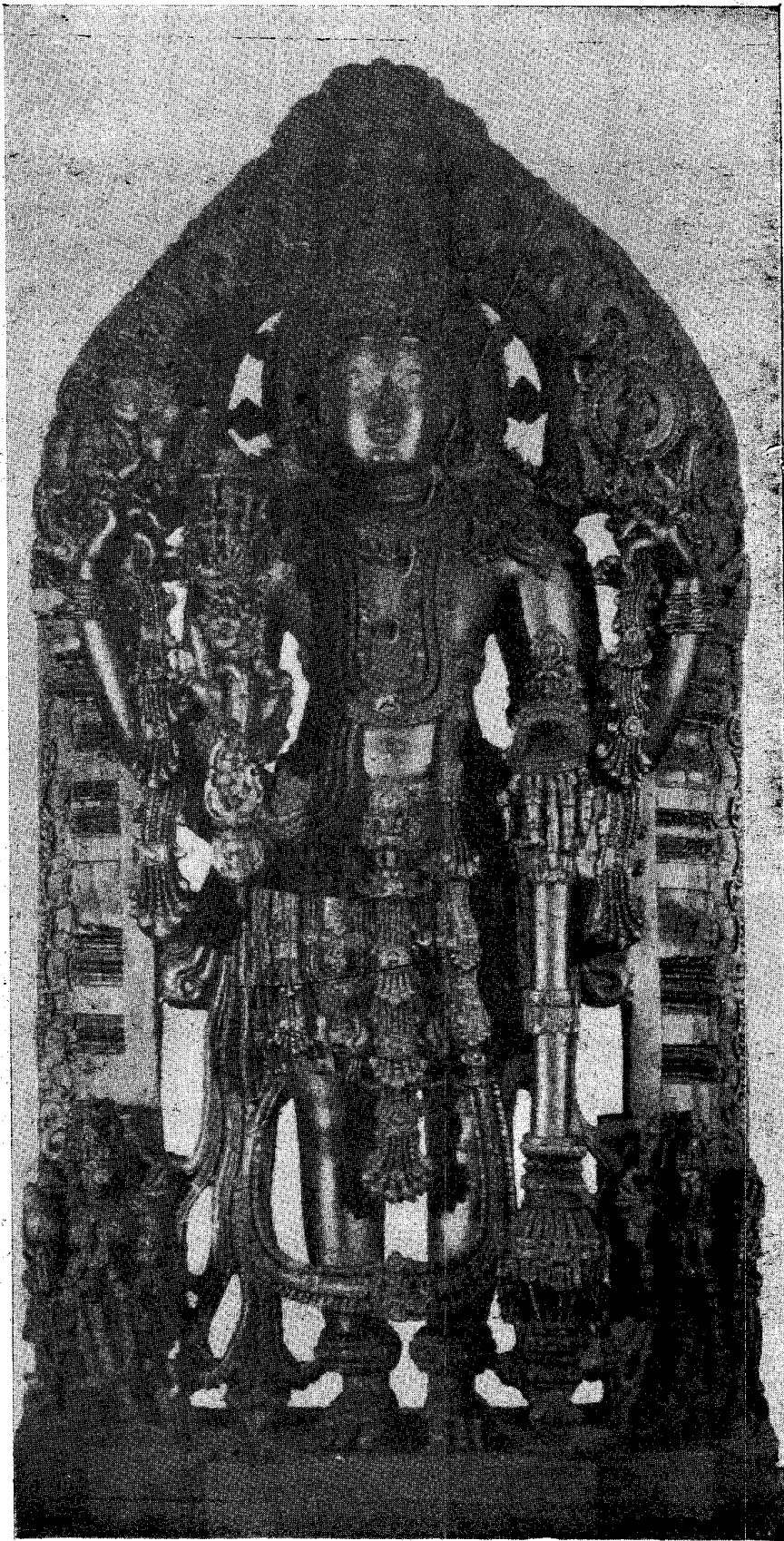
- BALAKRISHNA, DR. R. .. Industrial Development of Mysore, 1940.
- DERRETT, J. DUNCAN, M. The Hoysalas, A Medieval Indian Royal Family, 1957.
- D'SOUZA, V. L. .. The National Income and Taxable Capacity of Mysore, 1927.
- GOPALA RAO, H. G. .. Soil and Soil Fertility in Mysore State, 1960.
- HALAPPA, G. S. .. History of Freedom Movement in Karnataka, Vol. II, 1964.
- HAYAVADANA RAO, C. .. History of Mysore, Vols. I to III, 1943 and and 1946.
- HAYAVADANA RAO, C. .. Mysore Gazetteer, Vols. I to V (1927 to 1930).
- KRISHNAMURTHY, G. .. Report of the Secondary Educational Survey in Mysore State, 1966-67, 1967.
- KRISHNA RAO, M. V. .. The Gangas of Talakad, 1936.
- LEARMONTH, A. T. A. .. A Regional Synthesis, Mysore State, Vol. II, 1962.
- LEARMONTH, A. T. A. An Atlas of Resources of Mysore State, AND BHAT, L. S. Vol. I, 1961.
- NANDIMATH, DR. S. C. *Kannada Nadina Charitre*—Part II. *Karnatakada Dharmagalu*, 1949.
- NARASIMHA MURTHY, K. *Tumakooru Kaipidi*, 1947.
- NILAKANTA SASTRI, K. A. A History of South India from pre-historic times to the fall of Vijayanagar, 1955.
- PUTTANNA, M. S. .. *Palayagararu*, 1923. *Hagalavadi Palayagararu*, 1931.
- RAMAIYA, P. R. .. Mysore's Political Evolution, 1961.
- RICE, B. LEWIS .. Mysore Gazetteer, Vols. I and II, 1897.
- SALETORRE, B. A. AND *Kannada Nadina Charitre*, Part I, 1941. DESAI, P. B.
- SESHADRI, M. .. The Stone-using Cultures of Prehistoric and Protohistoric Mysore, 1956.
- SHAMA RAO, M. .. Modern Mysore, Vols. I and II, 1936.
- SHIVAMOORTHY SHASTRI, B. *Karnataka Sandarshana*, 1962.
- SRINIVAS, M. N. .. Marriage and Family in Mysore, 1942.
- WILKS, Lt. Col. MARK History of Mysore, Vols. I and II (edited with notes by Murray Hammick), 1930.

- Annual Reports of Mysore Archaeological Department, 1927, 1934, 1935, 1938, 1939, 1945, 1947-56.
- Census Handbook (1951), Tumkur District.
- Census of India, 1961, Vol. XI, Mysore—Part II-A, General Population Tables, 1964.
- Census of India, 1961, Vol. XI, Mysore—Part II-B(i), General Economic Tables, 1965.
- Census of India, 1961, Vol. XI, Mysore—Part II-B(ii), General Economic Tables, 1965.
- Census of India, 1961, Vol. XI, Mysore—Part II C(i), Social and Cultural Tables, 1966.
- Development Schemes of Mysore, Vols. I and II, 1946.
- Economic Situation in Mysore (Review of economic conditions in Mysore State), Department of Statistics, 1961.
- Five-Year Plans of Mysore State, I, II and III.
- Livestock Census, Mysore State, 1961 and 1966.
- Monograph on Woollen Industry in Mysore, 1935.
- Mysooru Rajya*, 1956.
- Mysore Revenue Survey Manual.
- Mysore State in Maps, 1966.
- Note on Progress of Industries in Mysore and Future Development Programme, 1961.
- Provincial Gazetteers of India, Mysore State, 1908.
- Report of Mysore Educational Integration Advisory Committee, 1958.
- Report of Mysore Tenancy Agricultural Land Laws Committee, 1958.
- Report of the Committee for Revision of Land Revenue System, 1950.
- Report of the Court of Enquiry of Silk Industry, 1955.
- Report on Industrial Development Potentialities of Tumkur District, Small Industries Service Institute, Bangalore, 1962.
- Report on the Survey of possibilities of Industrial Development under Rural Industries Project, Tumkur—Gubbi, 1963.
- Review of Progress of Education in Mysore from 1932 to 1956.
- Road Statistics, Mysore State, as on 31st March 1967.
- “Special Long-term Programme for the development of Backward Areas of Mysore State”, 1967.
- Statistical Abstract of Mysore, 1923-24 to 1947-48.
- Statistical Abstracts of Mysore of various periods since 1948.
- Third Five-Year Plan of Tumkur District, 1963.
- Village Survey Monograph on Kodigenahalli (Tumkur district) prepared as a part of the Census Operations of 1961.

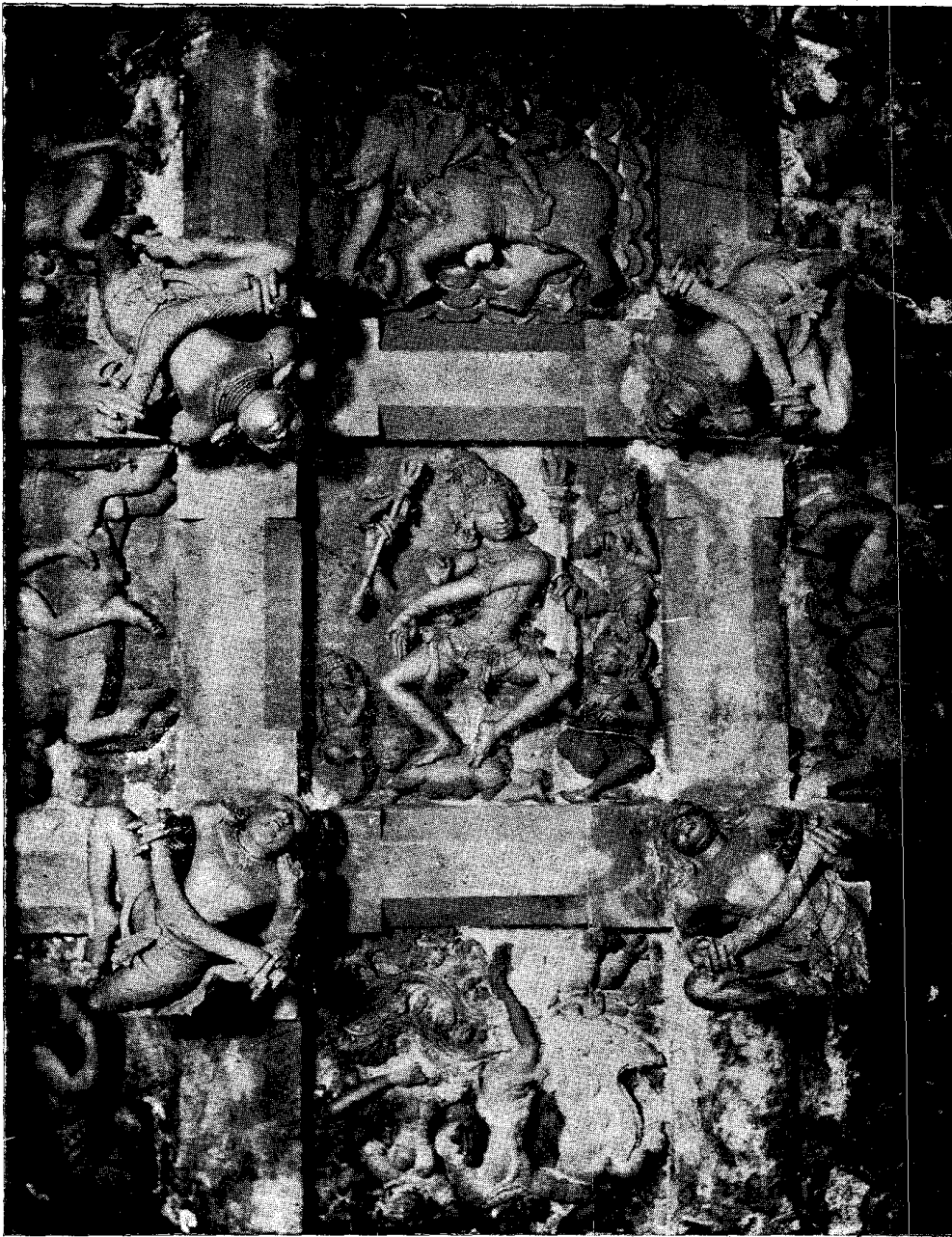
(See also Notes on Chapter II)



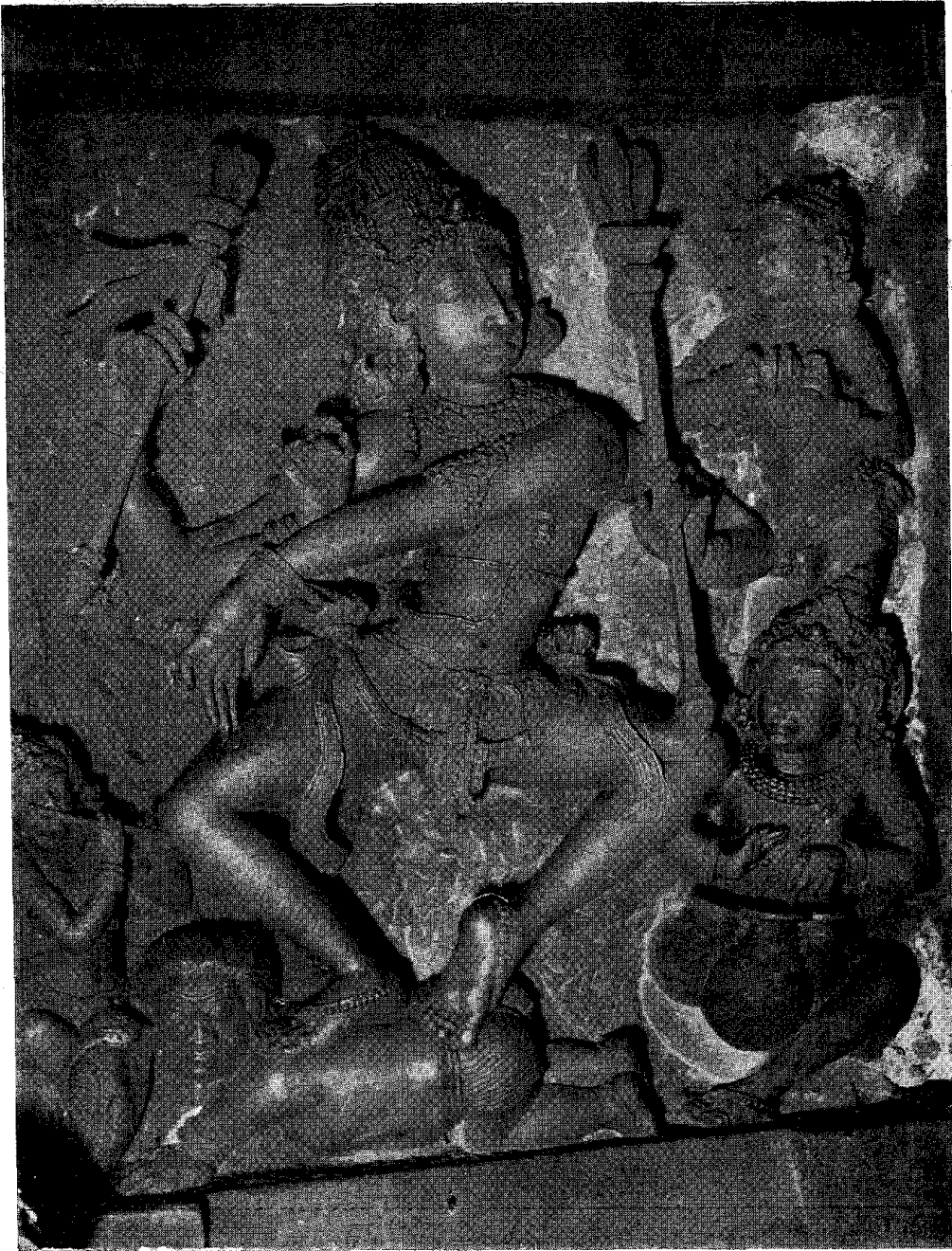
A sectional view of the Kedareshvara temple, Nagalapura, Turuvekere taluk, which is built of soapstone and has finely carved sculptures.
(See pp. 48-49 and 593)



Channakeshava figure of the Channakeshava temple, Kaidala, Tumkur taluk, which is associated with the name of Jakanaachari (*See* pp. 584 and 585).



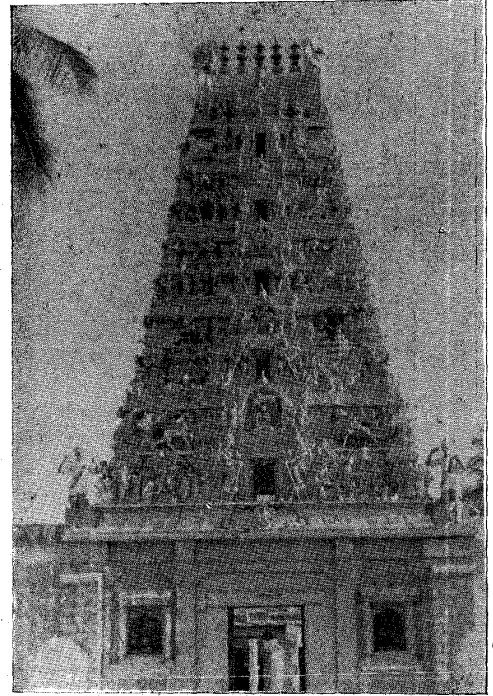
A view of the central ceiling of the Kalleshvara temple, Aralaguppe, Tiptur taluk, which has elegantly worked figures of Ashta-Dikpalakas, Gandharvas and Tandaveshvara (*vide* pp. 571 and 572). See also next plate.



A larger picture of Nataraja (Tandaveshvara) carved in the middle of the central ceiling of the Kalleshvara temple, Aralaguppe, Tiptur taluk, already shown in the previous plate.



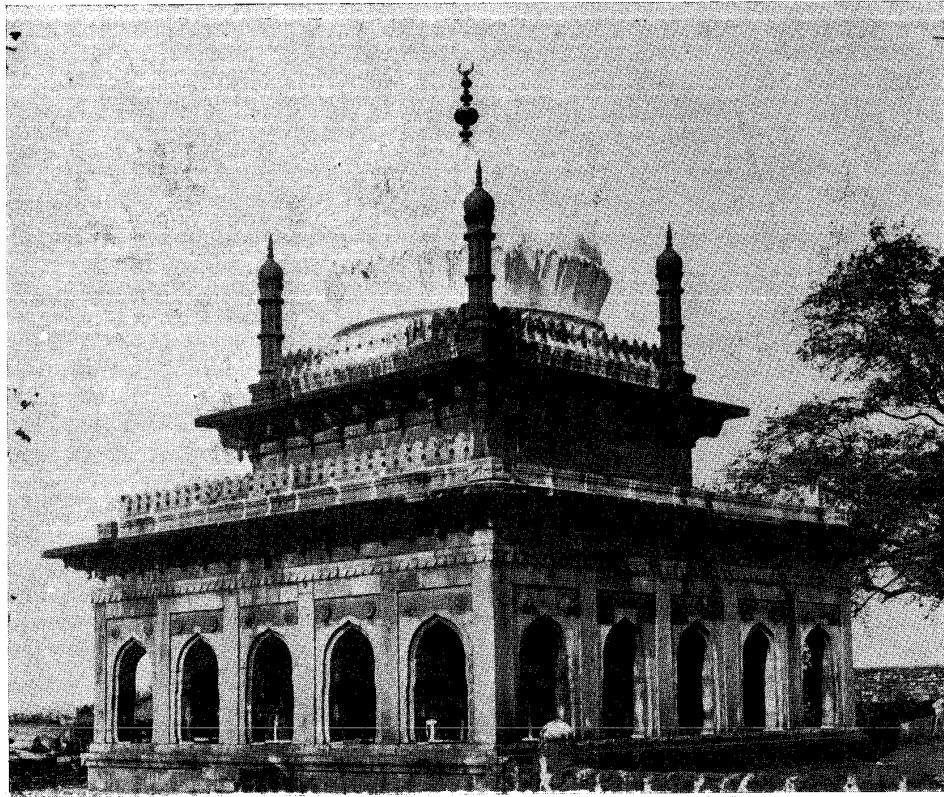
Dancing Vishnu of Channakeshava temple, Aralaguppe,
Tiptur taluk (See pp. 51-52 and 571).



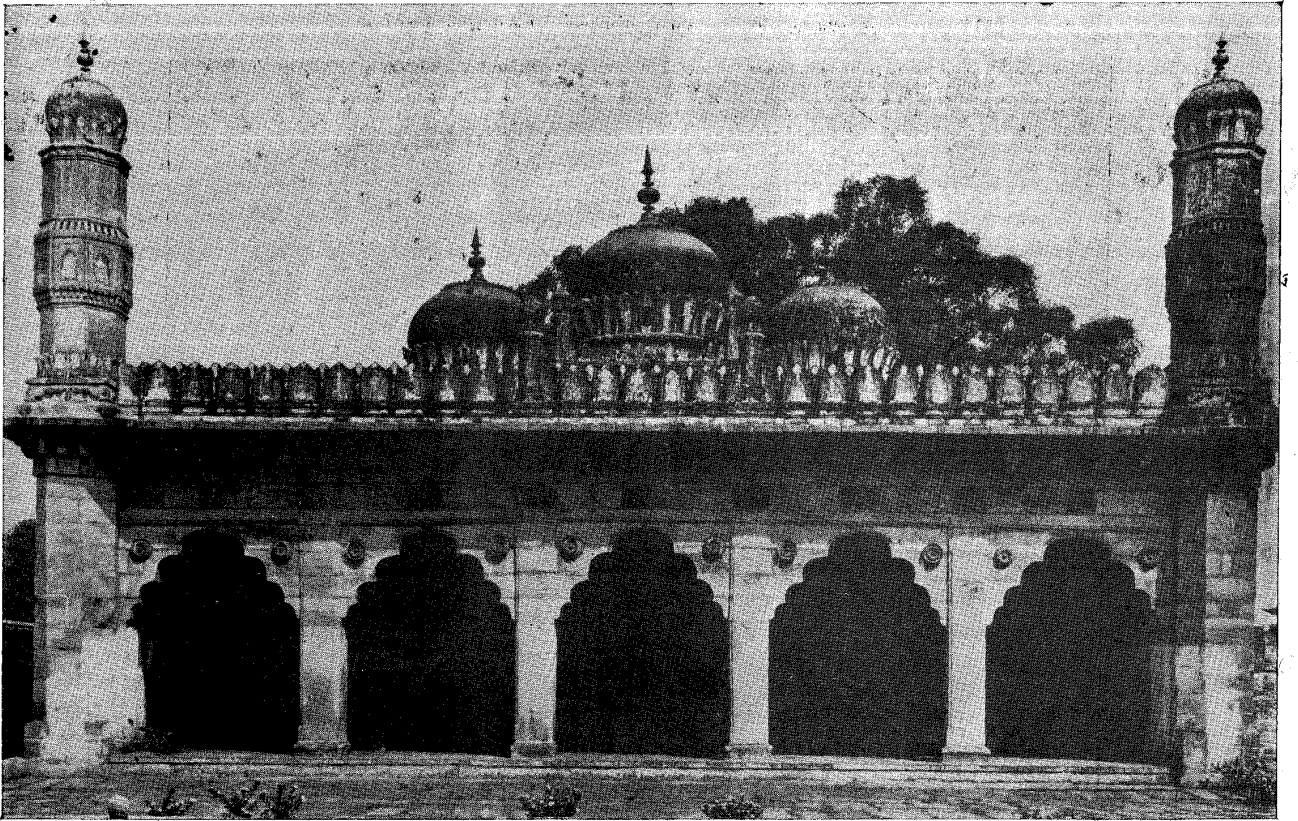
Recently renovated gopura of the Chennabasaveshwara
temple, Gubbi (See p. 578).



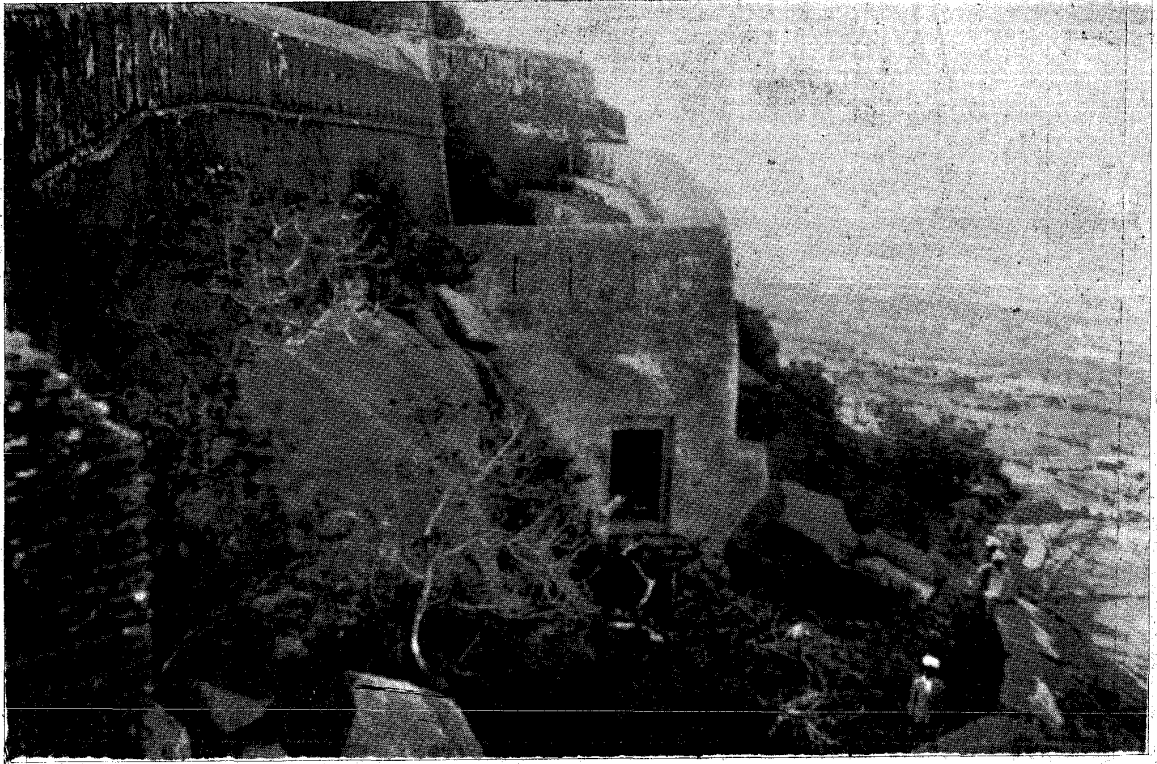
Mahishasuramardini in Lakshminarasimha temple, Vighnasante, Tiptur taluk, fighting a demon; she is holding a *prayoga-chakra*, a *trishula* and other arms.
(See also pp. 48 and 605)



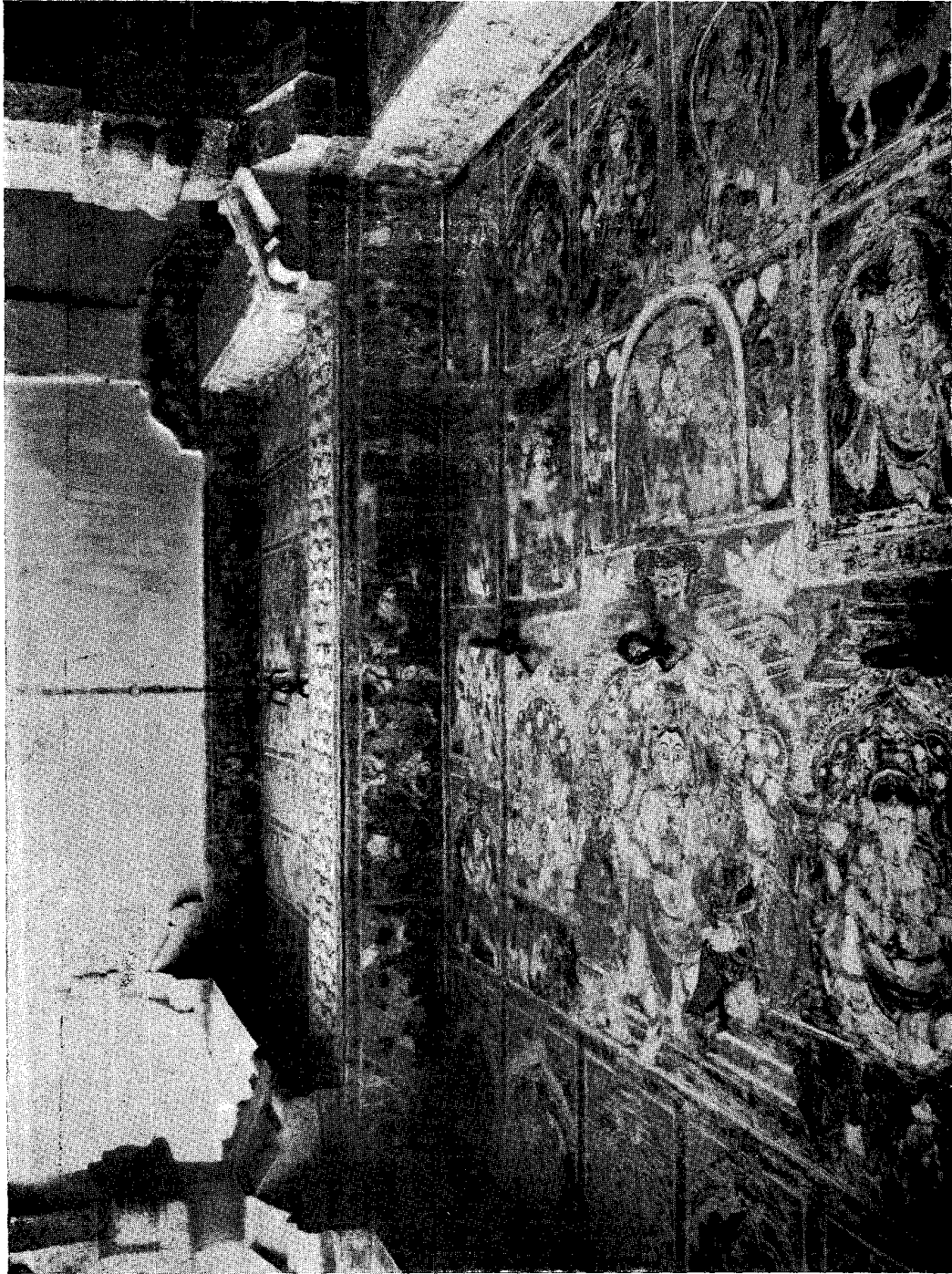
Malik Rihan Darga, Sira, a pretty structure of the 17th century (See pp. 57-58 and 599).



An east view of the Jumma Masjid, Sira, built towards the end of the 17th century (*See* also pp. 57 and 599).



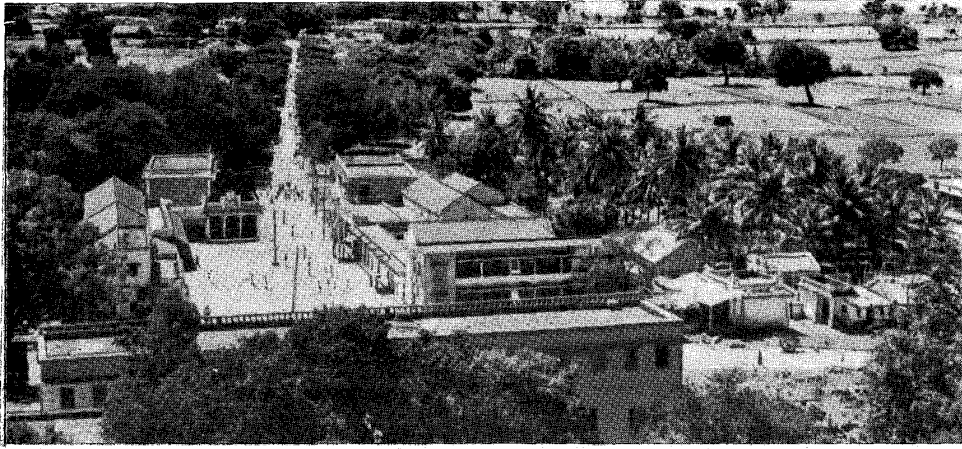
Hill-Fort of Midigeshi, Madhugiri taluk (*See pp. 53 and 592*).



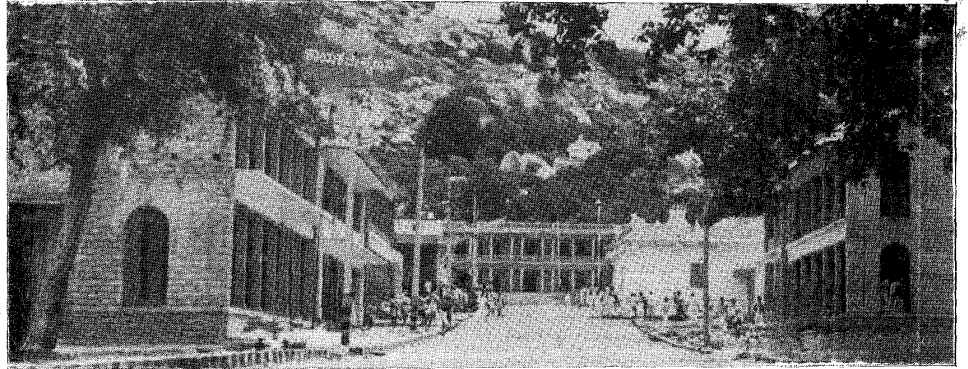
A mural painting done on the ceiling of the Narasimha temple, Seebi, Sira taluk (See p. 597).



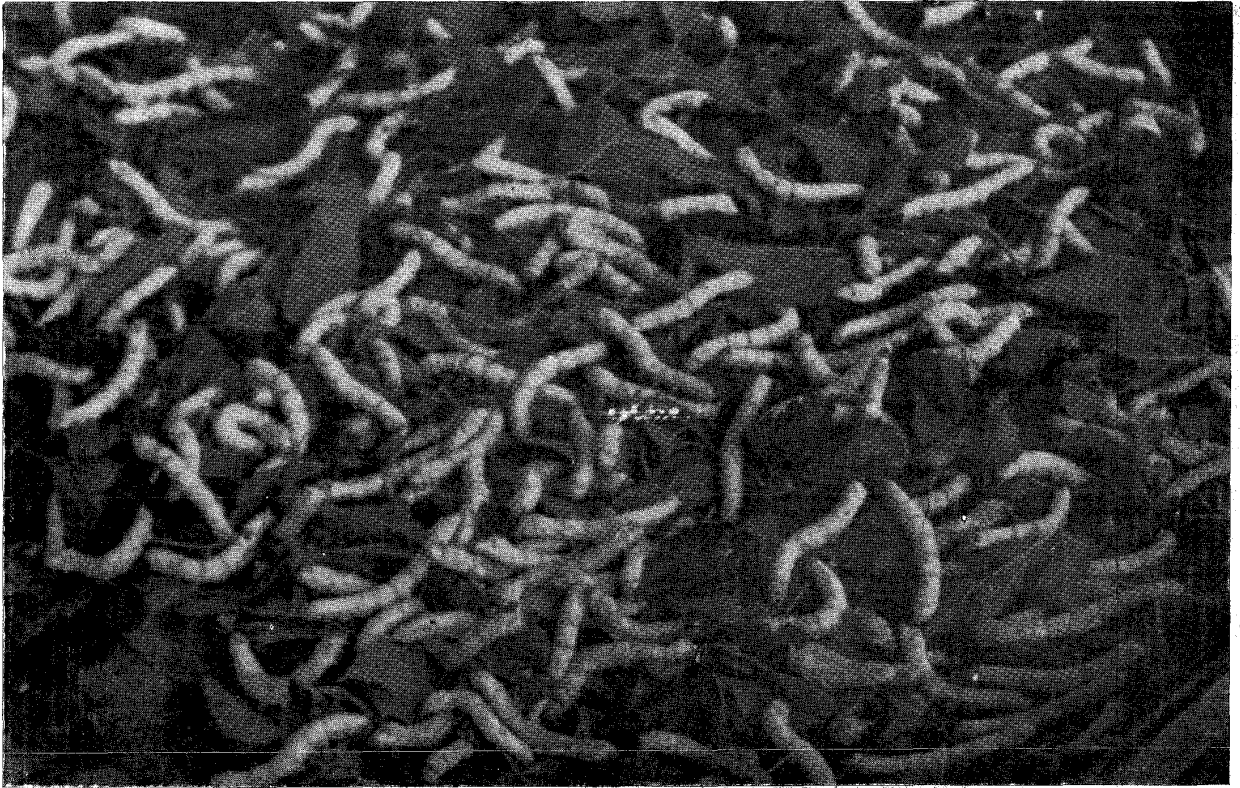
A general view of the Devarayanadurga hill (3,896 feet) in Tumkur taluk which is being developed as a tourist centre.
(See pp. 8, 10, 55-56 and 575-576)



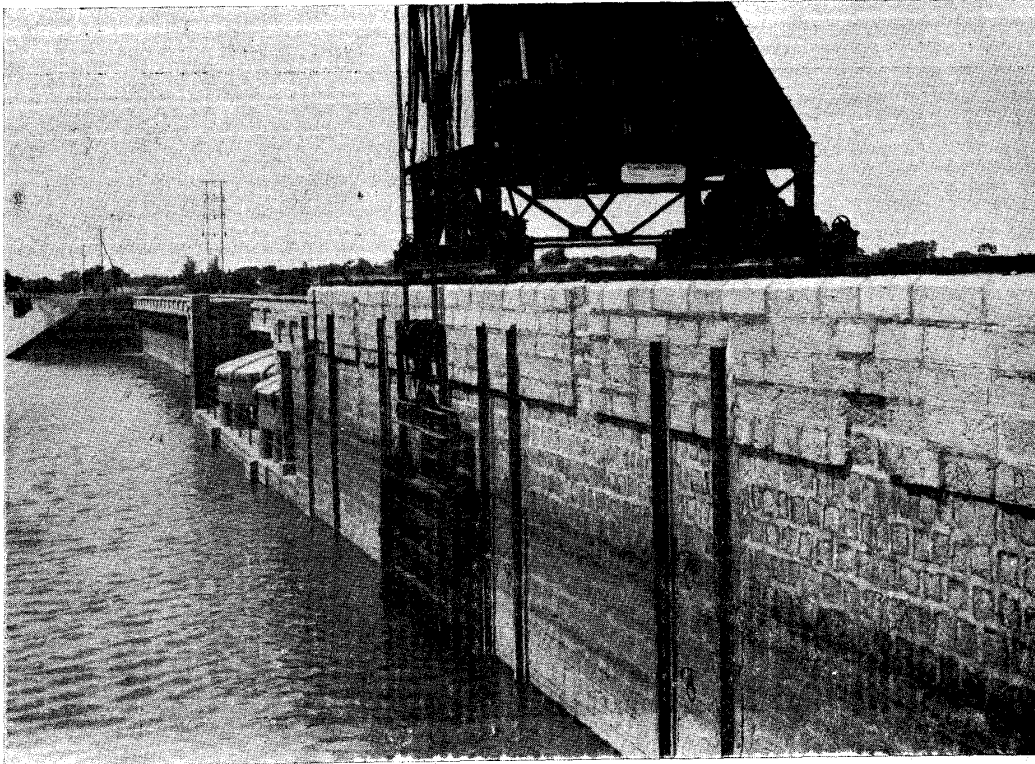
An aerial view of the Siddhaganga Matha in Tumkur taluk (See pp. 497, 563 and 598) which runs several social service and educational institutions.



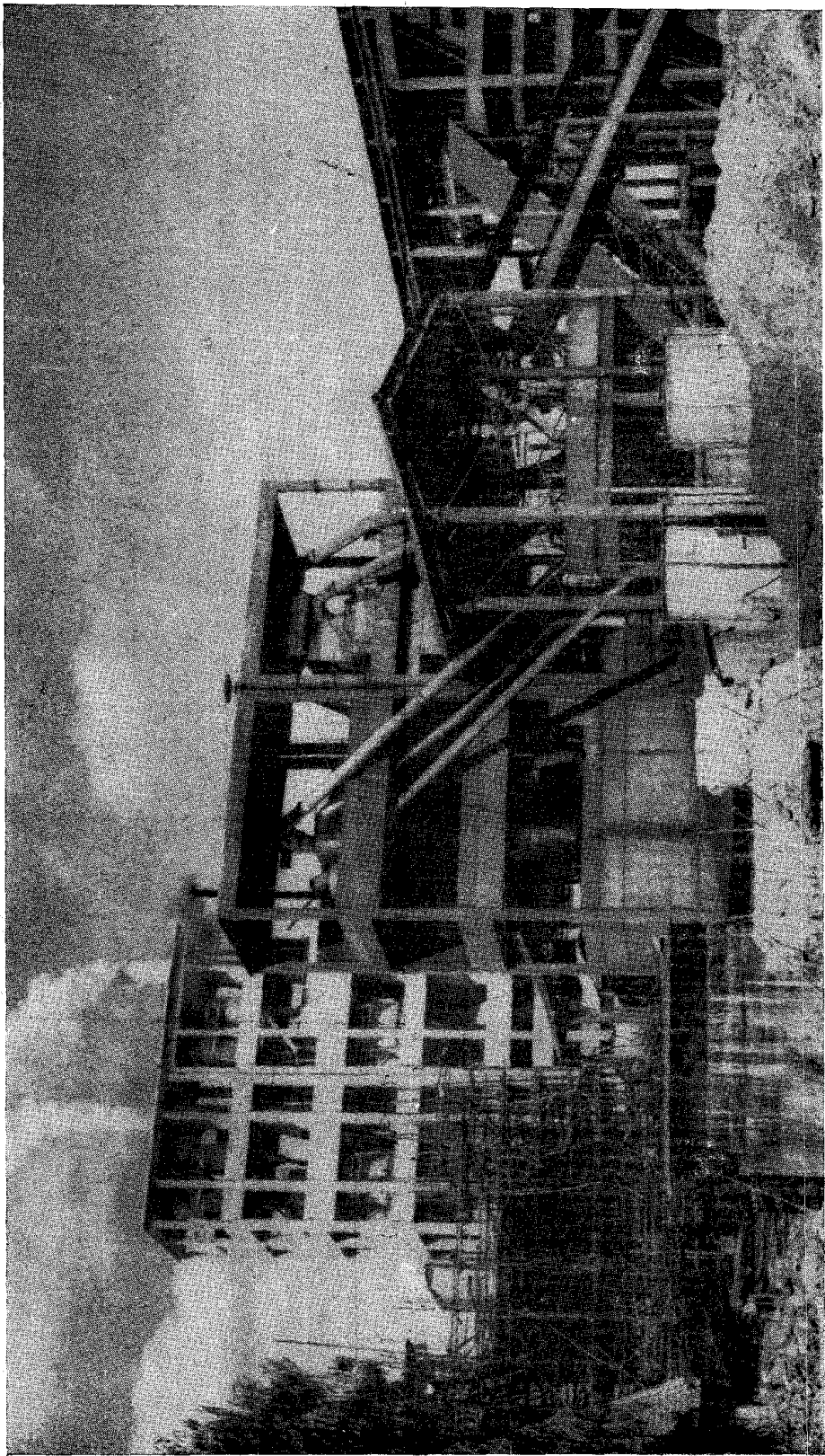
Front view (entrance) of the Siddhaganga Matha



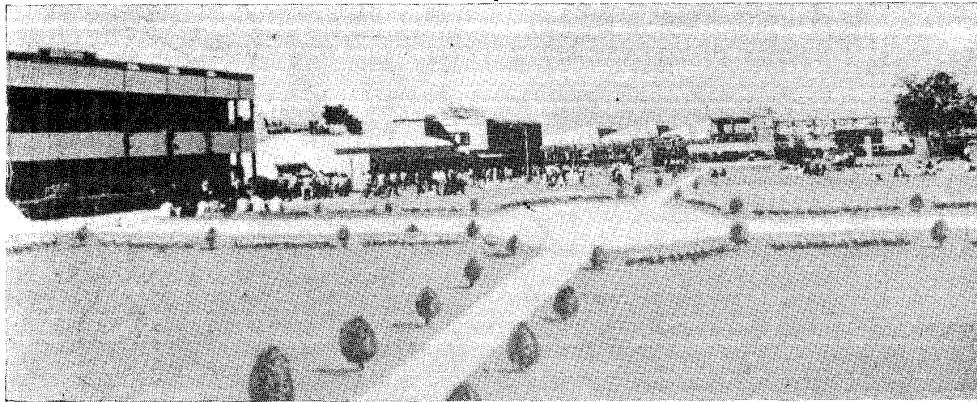
Kunigal and three other taluks in Tumkur district are reputed for Sericulture. The above picture shows rearing of silk-worms.
(See pp. 205-208)



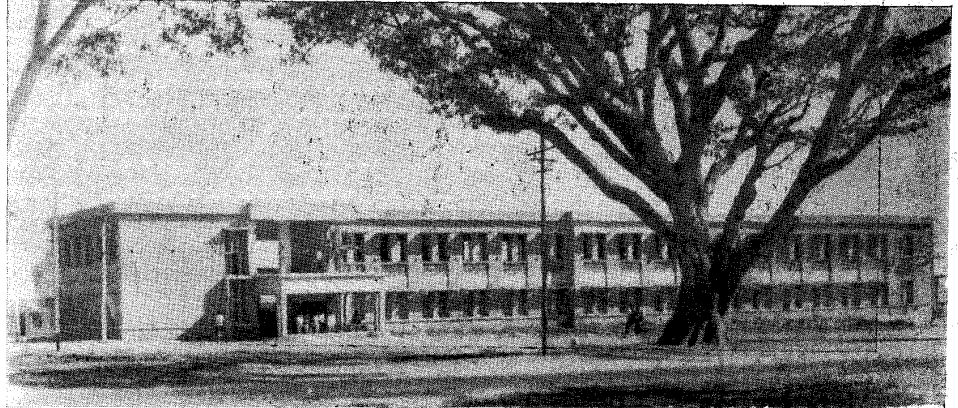
A side view of Marconahalli dam in Kunigal taluk. Constructed in 1939, it is one of the earliest major dams.
(See p. 113)



A sectional view (pre-heater section) of the Cement Factory at Ammasandra, Turuvekere taluk (See pp. 188—191).



An aerial view of Sri Siddhaganga Institute of Technology at Tumkur (See pp. 494-495).



Front view of the Kalpataru College at Tiptur (See pp. 492-494).